



R-Win box

Connect any PLC, sensor or field device to existing SCADA network without writing a line of code or changes to existing hardware!



TOUCH NOTHING. UPGRADE EVERYTHING.

R-Win Box modernizes SCADA networks. It standardizes all communication protocols and makes them more secure than ever. On one side it can connect to any PLC, sensor or field device, regardless of protocol type, and on the other side it connects to any wireless transceiver.

R-Win Box runs the R-Win SCADA Network Manager that enables secure and reliable real time data communication management, without hardware or software changes, using AGM's proprietary Push by Exception protocol. Finally, you are in complete control of your SCADA network without writing a line of code!

The New **R-Win Inside** was designed to provide extreme performance for remote sites which demand extremely reliable data transfer from the field to the control center. Through communications hardening, **R-Win Inside is your last line of defense against intrusion to your SCADA network.**

R-Win BOX

Benefits



Zero down time SCADA network expansion & upgrades



Completely secured with communication hardening
No external servers, no cloud technology



Allowing direct real-time communication between sites



No software changes:
All existing PLC software remains the same



No hardware changes:
Completely vendor agnostic / Full compatibility with any existing PLC equipment, old and new / Up to 3 different PLC protocols to one R-Win unit



100% data transfer accuracy



Huge cost savings with gradual implementation & only one-time payment



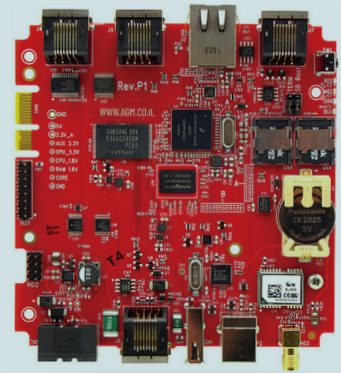
Multi-spectrum connection (RF, satellite, cellular)



Full Industrial temperature range: -40c - +85c



PLC clock GPS synchronization



R-WiN BOX

Technical specifications



CPU

CPU Arch: ARM

CPU Vendor: NXP

CPU Part Number: i.MX286

CPU Speed: 454 MHz

RAM

RAM: 128 MB to 256 MB

External Storage

microSD Socket: x2

Data Acquisition & Control

Supported PLC Protocols: Modbus TCP, Modbus RTU Serial, AB DF1, Siemens Profinet and GE SNPX

Digital Input/Output: x4

Interfaces

10/100 Ethernet: x1

USB Host: x1

RS-232/Serial/COM Port: x2

RS-485 Port/ Modbus serial port: x1

GPS receiver: x1

Onboard Devices

Battery-Backed Real Time Clock: x1

Watchdog Timer: x1

Temperature Sensor: x1

Operation Temperature

Fanless Temp Range: -40 °C to 85 °C

Power Consumption

Min Power Consumption: 0.60 W

Max Power Consumption: 1.30 W

Low Power Sleep Mode: < 10mW

Operating Supply Voltage

Operating Supply Voltage: 8 - 28 VDC

Mechanical

Length: 130mm

Width: 130mm

Depth: 40mm



Mitzpe moshava, Lower galille 1527600

972-4-6774755 | Fax: 972-4-6774756 | M: 972-54-4284221

www.r-win.net | www.agm.co.il | agm@agm.co.il